



+++
ENVIGO

Research Models
and Services
Health Monitoring

Non Sacrificial Panel (NSP) Sampling

Sampling kit material

NSP does not require any specialized instruments, centrifuges, pipettes or vials. Envigo supplies the following materials:

Sampling material included in this kit:

- + **BAG 1:** fur swabs, 2ml tubes and 5ml tube to collect swabs after sampling and a biohazard bag.
- + **BAG 2:** wet swabs with transport medium (Portagerm, oral swabs for microbiology tests - culture) and a biohazard bag.
- + **BAG 3:** flocked swabs, 2ml tubes and 5ml tube to collect swabs after sampling (oral swabs for rtPCR test) and a biohazard bag.
- + **BAG 4:** DBS cards (non-irradiated) with desiccant and a biohazard bag.
- + **BAG 5:** 2ml tubes and 5ml tube to collect fecal samples and a biohazard bag.

Note:

- + All material provided are sterile except DBS cards that can be sterilized by autoclave or fume chamber.
- + Please use 5ml tube for pooled samples and 2ml tubes for single samples.

Sampling material not included

- + Sterile needles
- + Sterile forceps
- + Scissors



1

Fur swab sampling (use bag 1).

- A Place mouse or rat on wire bar lid and gently restrain.
- B Rub the swab well on the fur against the direction of the hair coat → Figure 1,2
- C Swab the inguinal region, back, head, over the ears and the neck → Figure 1,2,3
- D Place swab tip into a labeled fur sterile tube with sample ID according to packing and shipping instruction documents.
- E Put the tube in **BAG 1** following the packing instruction.

Pooling options:

- + Up to 5 samples can be combined into one, single pool.

Figure 1

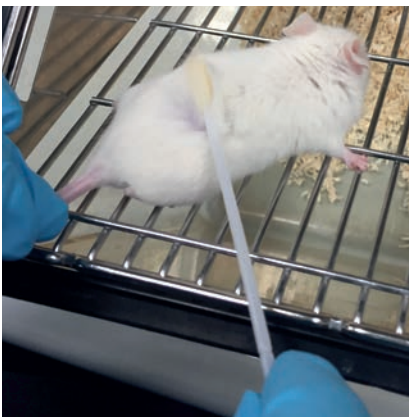


Figure 2



Figure 3



2

Wet (use bag 2) or flocked (use bag 3) oral swab sampling.

- A Use flocked oral swab (bag 3) for rtPCR testing or the wet oral swab (bag 2) (Portagerm) for culture detection.*
- B Label the swab tube with sample ID according to packing and shipping instruction documents.
- C Hold the mouse/rat with one hand so that it can't move the head from side to side. → Figure 4
- D Insert the swab from the corner of the mouth so the animal will open it. → Figure 4
- E Slowly rub the swab to collect the sample. → Figure 4
- F Place the swab tip into a provided sterile tube.
- G Put the tube in **BAG 3** following packing instruction.
- H In the case of wet swab (only for culture detection) put the entire swab into the Portagerm tube and put the tube in **BAG 2** following the packing instruction.

Pooling options:

- + A maximum of 5 samples can be pooled into one, single pool.
- + Wet oral swabs cannot be pooled

Figure 4



Please store all the sampling materials at room temperature until shipment

* Use the wet oral swab (Portagerm, bag 2) for culture detection or flocked oral swab (bag 3) for rtPCR testing.

3

Dry blood spot sampling (use bag 4).

- A Label your DBS cards with the sample ID.
- B Place mouse/rat on wire bar lid → Figure 5
- C Using a needle nick the ventral tail artery → Figure 5
- D Blot 2 blood drops directly onto the circle printed on the card. → Figure 6
- E The drop size needs to be at least 0.5 cm in diameter.
Please ensure that the drops don't exceed the circles as if different samples coalesce the samples cannot be tested. → Figure 7a,b
- F Leave the card to air dry for a minimum of 1 hour.
- G Secure the card using the tab.
- H Put the cards in **BAG 4** following packing instruction.

Pooling options:

- + We do not recommend pooling DBS and serology samples due to the potential non-specific/idiopathic interactions between samples, causing false negative/positive reporting.

Note:

- + Other blood collection techniques include lateral vein venipuncture and facial or temporal venipuncture may be used.
- + The DBS cards can be fumigated or autoclaved.

Figure 5



Figure 6

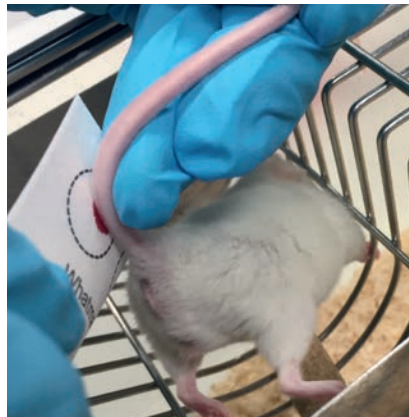


Figure 7a - Correct

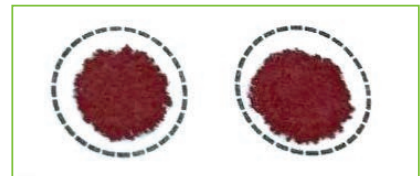
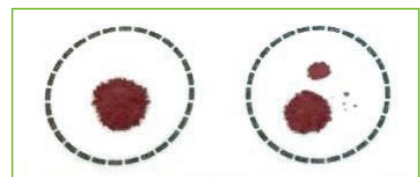


Figure 7b - Incorrect



4

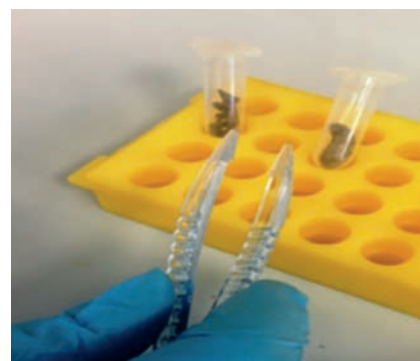
Fecal samples collection (use bag 5).

- A Single sample: collect up to 10 fecal pellets for mice and up to 2 fecal pellets for rats.
- B Place fecal pellets into labeled tubes.
- C Put the vials in **BAG 5** following packing instruction.

Pooling options:

- + Pooled samples (up to 5 cages): ideally collect 2 fecal pellets for mice and 1 for rats from each cage using sterile forceps.
- + If possible, for pooled samples please collect equally fresh and dried pellets.

Figure 8



Note:

- + Ship the same day at room temperature in sealed tubes.



Hopefully these instructions have been helpful to you upon collecting samples. In case of any doubt, please don't hesitate to contact one of our Envigo Laboratory facilities:

UK: Customer Services

Dodgeford Lane, Belton
Loughborough
Leicestershire, LE12 9TE
United Kingdom

Tel: +44 1530 222123

Email: RMS-UK-Technical-services@envigo.com

EU Continent: Health Monitoring Lab

Via Nuova Valassina, 78

Uscita Desio centro, a fianco Linea8

20832 Desio (MB)

Italy

Tel: +39 02 6145 1011

Email: healthmonitorlab@envigo.com



**Also read
the Packing
and Shipping
Instructions!**

Contact us

North America 800.793.7287 EU and Asia envigo.com/contactus RMS-UK-Technical-services@envigo.com

